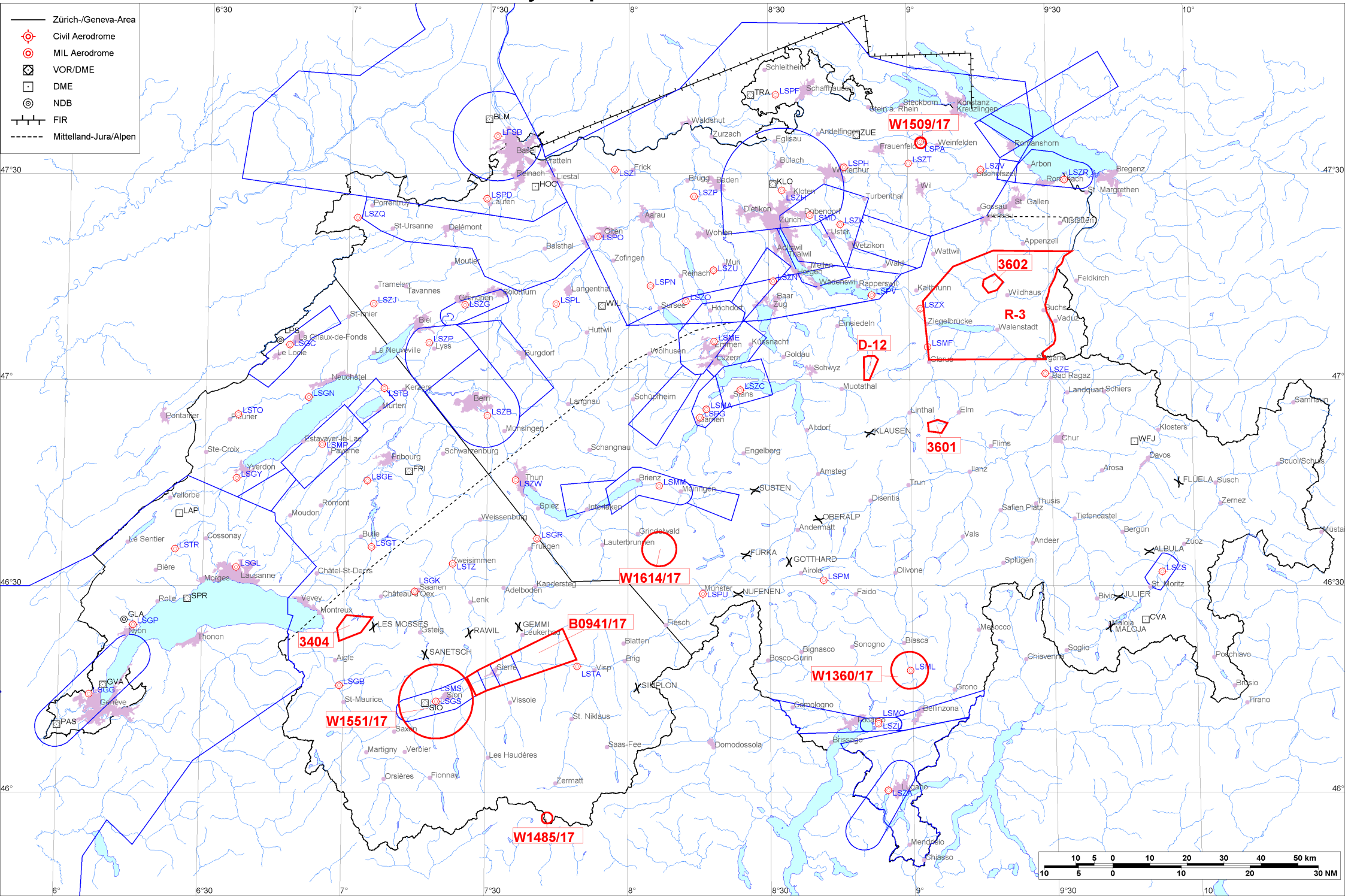


- Zürich-/Geneva-Area
- ⊕ Civil Aerodrome
- ⊙ MIL Aerodrome
- ⊠ VOR/DME
- DME
- ⊙ NDB
- FIR
- - - - - Mittelland-Jura/Alpen





skyguide  
KOSIF  
Postfach  
CH-8602 Wangen

## DABS Date: 2017 SEP 13

Version 6 - generated: 13.09.2017 11:47 UTC

Telephone: +41 44 813 31 10  
E-mail: kosif@skyguide.ch  
DABS on the web:  
<https://www.skybriefing.com>



**Firings / AIP-Areas / Warnings:**

Firing-Nr AIP-Area NOTAM-Nr	Validity UTC	Lower Limit (m/ft AMSL or FL)	Upper Limit (m/ft AMSL or FL)	Center Point	Covering Radius	NOTAM Item E
3404	0700 - 2100	GND	4500m / 14800ft	462340N 0070230E	5.5 KM / 3.0 NM	FRNG WILL TAKE PLACE AREA 4.1 KM NNW LE SEPEY, 462314N0070341E 462156N0065902E 462350N0065835E 462543N0070034E 462524N0070558E (46234039N007022987E RADIUS 3.0 NM).
3601	0700 - 2100	GND	4500m / 14800ft	465311N 0090552E	2.8 KM / 1.5 NM	FRNG WILL TAKE PLACE AREA 6.8 KM SW ELM, 465229N0090355E 465214N0090638E 465318N0090738E 465340N0090757E 465408N0090553E 465342N0090348E (46531079N009055205E RADIUS 1.5 NM).
3602	0800 - 1400	GND	3600m / 11850ft	471354N 0091803E	2.8 KM / 1.5 NM	FRNG WILL TAKE PLACE AREA 3.6 KM WSW SAENTIS, 471521N0091829E 471411N0092015E 471301N0091853E 471237N0091704E 471337N0091551E 471430N0091603E (47135395N009180280E RADIUS 1.5 NM).
! D-12	1100 - 2100	GND	1800m / 5900ft	470140N 0085126E	3.6 KM / 1.9 NM	D-AREA LS-D12 SIHLTAL ACT.
R-3	1345 - 1425	FL100	FL130	471047N 0091932E	24.3 KM / 13.1 NM	R-AREA LS-R3 SPEER ACT.
! B0941/17	1115 - 1505	REF AIP	REF AIP	461816N 0073734E	15.0 KM / 8.1 NM	SION TEMPO MIL TMA ALL SECT ACT.
W1360/17	0505 - 1746	GND	450m / 1550ft	461742N 0085920E	5.0 KM / 2.7 NM	UNMANNED ACFT ACT MAY TAKE PLACE AT LODRINO AD, RADIUS 5.0 KM (461742N0085920E RADIUS 2.7 NM). FOR DETAILED INFO CTC CHIEF FLT OPS LOCARNO, TEL +41 58 481 24 68 OR HELI TV +41 91 873 40 40.
W1485/17	0000 - 2359	3500m / 11400ft	3900m / 12800ft	455612N 0074309E	0.9 KM / 0.5 NM	TEMPO D-AREA ESTABLISHED 2.3 KM WSW BREITHORN, RADIUS 0.9 KM (455612N0074309E RADIUS 0.5 NM). UNMARKED CABLES BTN TESTA GRIGIA AND KLEIN MATTERHORN (VCY OF THEODULGLETSCHER MT LDG PLACE), MAX 650 FT AGL.
W1509/17	2000 - 2359	GND	1950m / 6400ft	473426N 0090254E	1.0 KM / 0.5 NM	TEMPO D-AREA ESTABLISHED AT AMLIKON AD, RADIUS 1.0 KM (473426N0090254E RADIUS 0.5 NM). WX MEASUREMENTS BY REMOTELY PILOTED AERIAL SYSTEM WILL TAKE PLACE. WHITE BLINKING PSN LGT WITH VISUAL RANGE OF AT LEAST 3 KM.
W1551/17	1130 - 1500	GND	FL120	461309N 0071937E	10.0 KM / 5.4 NM	TEMPO D-AREA OUTSIDE CTR ESTABLISHED AT SION AD WI RADIUS 10.0 KM (461309N0071937E RADIUS 5.4 NM). DUE TO HEAVY JET AND AEROBATICS ACTIVITY. FOR INFO CTC SION TWR 118.275 MHZ.
W1614/17	0000 - 2359	GND	FL130	463519N 0080635E	4.6 KM / 2.5 NM	TEMPO R-AREA ACT AT SCHRECKHORN DUE TO ACFT ACCIDENT. RADIUS 4.6 KM (463519N0080635E RADIUS 2.5 NM). ENTRY PROHIBITED FOR CIV ACFT EXC HEL EMERG MEDICAL SER (HEMS).



skyguide  
KOSIF  
Postfach  
CH-8602 Wangen

## DABS Date: 2017 SEP 13

Version 6 - generated: 13.09.2017 11:47 UTC

Telephone: +41 44 813 31 10  
E-mail: [kosif@skyguide.ch](mailto:kosif@skyguide.ch)  
DABS on the web:  
<https://www.skybriefing.com>



### Activities not shown on the DABS Chart Side:

NOTAM-Nr	Validity UTC	Lower Limit (m/ft AMSL or FL)	Upper Limit (m/ft AMSL or FL)	Center Point	Covering Radius	NOTAM Item E
! W1566/17	1115 - 1505	900m / 3000ft	2300m / 7500ft	461610N 0072940E	4.7 KM / 2.5 NM	R-AREA LS-RGS2 DEACTIVATED.
! W1567/17	1115 - 1505	1350m / 4500ft	2900m / 9500ft	461735N 0073415E	4.7 KM / 2.5 NM	R-AREA LS-RGS3 DEACTIVATED.
! W1622/17	1817 - 2000	GND	FL100	464500N 0080800E	181.5 KM / 98.0 NM	MIL NGT FLT WITH HEL WILL TAKE PLACE WI FLW TRG AREAS: WOLHUSEN TRIENGEN SUSTEN BURGDORF SCHANGNAU UPPER LIMIT: AIRSPACE CLASS E OR MAX ACCORDING TO ITEM G. REF VFR MANUAL SWITZERLAND VFR RAC 4-0 APP 1 (MIL NGT FLT CHART)
! W1623/17	2000 - 2359	GND	FL130	464500N 0080800E	181.5 KM / 98.0 NM	RDO CTC COMPULSORY WITH FIC FOR ALL NGT VFR FLT WI AIRSPACE CLASSES GOLF AND ECHO EXC HEL EMERG MEDICAL SER (HEMS) FLT DUE TO UNMANNED ACFT. FOR HANG GLD FLT COOR CTC OPS CENTER ON +41 58 467 29 10.

For detailed information regarding the DABS see AIP Switzerland GEN 3.1-5 or VFR Guide GEN 1-1.

! New or changed data regarding an earlier version of the DABS.