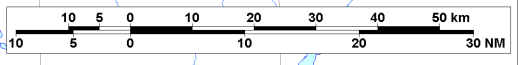
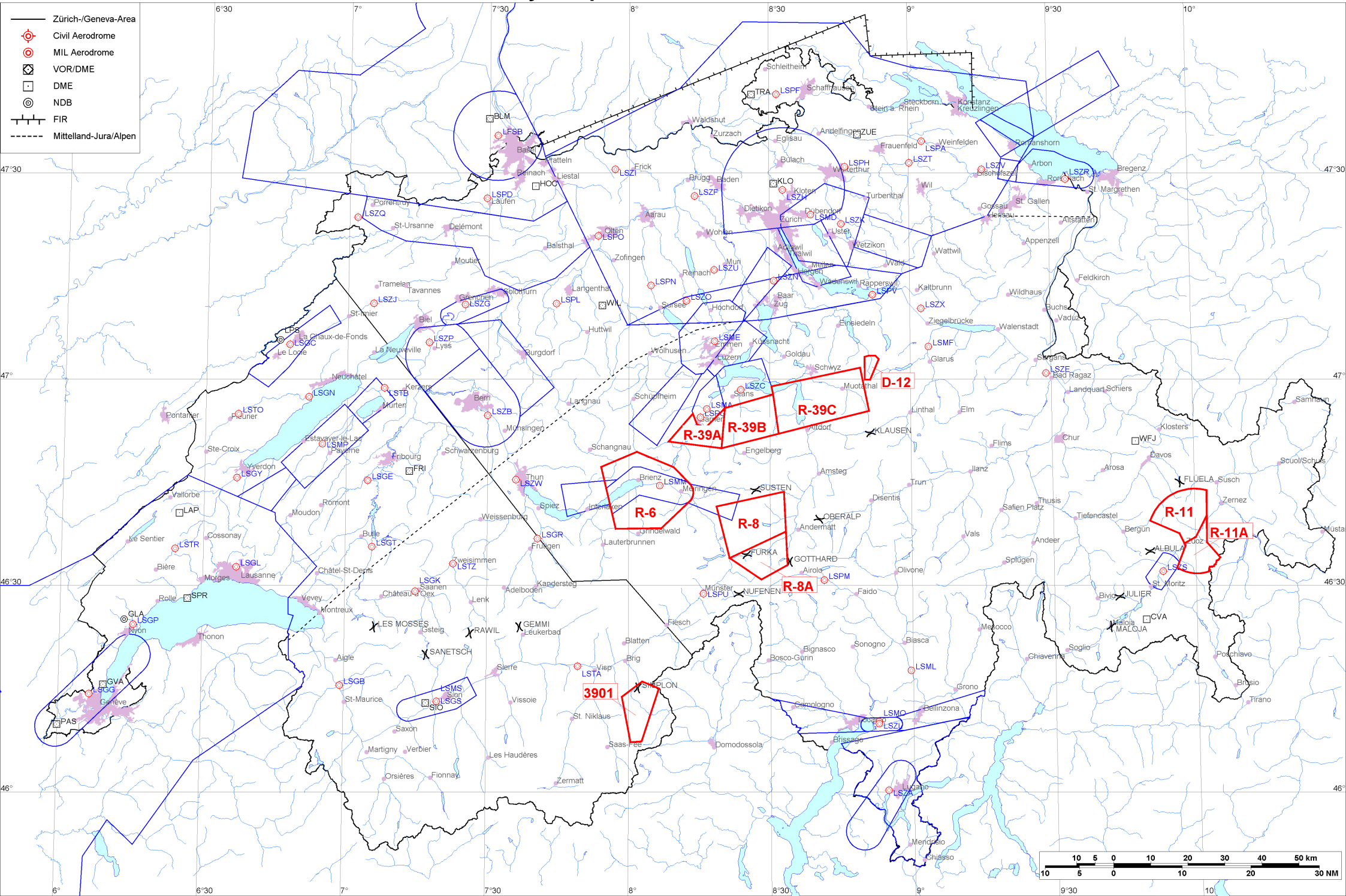


- Zürich-/Geneva-Area
- ⊕ Civil Aerodrome
- ⊙ MIL Aerodrome
- ⊠ VOR/DME
- DME
- ⊙ NDB
- FIR
- - - - - Mittelland-Jura/Alpen





skyguide
KOSIF
Postfach
CH-8602 Wangen

DABS Date: 2018 OCT 16

Version 5 - generated: 16.10.2018 13:45 UTC

Telephone: +41 44 813 31 10
E-mail: kosif@skyguide.ch
DABS on the web:
<https://www.skybriefing.com>



Firings / AIP-Areas / Warnings:

Firing-Nr AIP-Area NOTAM-Nr	Validity UTC	Lower Limit (m/ft AMSL or FL)	Upper Limit (m/ft AMSL or FL)	Center Point	Covering Radius	NOTAM Item E
3901 W1771/18	0700 - 1600	GND	6600m / 21700ft	461133N 0080215E	8.4 KM / 4.5 NM	FRNG WILL TAKE PLACE AREA 1.5 KM WSW SIMPLON, 461349N0075837E 460713N0080028E 460719N0080248E 461502N0080624E 461603N0080253E (461133N0080215E RADIUS 4.5 NM).
D-12 W1608/18	1100 - 2100	GND	3000m / 9850ft	470140N 0085126E	3.6 KM / 1.9 NM	D-AREA LS-D12 SIHLTAL ACT.
R-6 W1593/18	1130 - 1430	1850m / 6000ft	FL130	464400N 0080322E	13.2 KM / 7.1 NM	R-AREA LS-R6 AXALP ACT.
R-11 W1813/18	0630 - 2359	GND	9600m / 31500ft	464056N 0095708E	8.9 KM / 4.8 NM	R-AREA LS-R11 S-CHANF ACT.
R-11A W1815/18	0630 - 2359	2150m / 7000ft	9600m / 31500ft	463605N 0095959E	8.2 KM / 4.5 NM	R-AREA LS-R11A S-CHANF ACT.
R-39A W1829/18	1200 - 1400	2750m / 9000ft	FL130	465311N 0081435E	8.9 KM / 4.8 NM	R-AREA LS-R39A HEITLI ACT.
R-39B W1830/18	1200 - 1400	2750m / 9000ft	FL130	465352N 0082513E	10.1 KM / 5.4 NM	R-AREA LS-R39B BRISEN ACT.
R-39C W1831/18	1200 - 1400	2750m / 9000ft	FL130	465652N 0084033E	14.2 KM / 7.7 NM	R-AREA LS-R39C STOOS ACT.
R-8A W1833/18	1330 - 1430	2800m / 9200ft	FL210	463514N 0082747E	8.5 KM / 4.6 NM	R-AREA LS-R8A DAMMASTOCK ACT.
R-8 W1839/18	1330 - 1430	GND	FL210	463855N 0082657E	11.6 KM / 6.3 NM	R-AREA LS-R8 DAMMASTOCK ACT.

Activities not shown on the DABS Chart Side:

NOTAM-Nr	Validity UTC	Lower Limit (m/ft AMSL or FL)	Upper Limit (m/ft AMSL or FL)	Center Point	Covering Radius	NOTAM Item E
W1613/18	1115 - 1500	GND	FL130	462408N 0085255E	37.0 KM / 20.0 NM	INTENSE MIL FLT ACT BY PC7 ACFT WI AREA TICINO AND VALLE MESOLCINA/MISOX (SOUTHERN PART OF SWITZERLAND), RADIUS 37.0 KM CENTERED GIORNICO (4624N00853E RADIUS 20.0 NM)
W1846/18	1712 - 1830	GND	FL130	464500N 0080800E	181.5 KM / 98.0 NM	MIL NGT FLT WITH HEL WILL TAKE PLACE WI FLW TRG AREAS: UZWIL ZUGERSEE ALPSTEIN KLAUSEN SARGANS UPPER LIMIT: AIRSPACE CLASS E OR MAX ACCORDING TO ITEM G. REF VFR MANUAL SWITZERLAND VFR RAC 4-0 APP 1 (MIL NGT FLT CHART)

For detailed information regarding the DABS see AIP Switzerland GEN 3.1-5 or VFR Guide GEN 1-1.